

REKU

COATINGS



WASTE MANAGEMENT

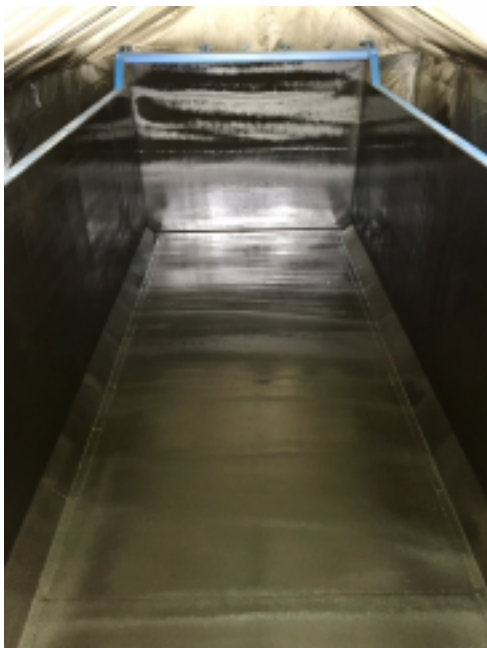
Future proof coatings

POLYUREA

Reku is one of a few companies in the UK specialising in Polyurea. With physical properties that offer the ultimate chemical resistance for steel and concrete, it is ideally suited for protecting assets within waste management.

With its strength and adhesion characteristics and its ability to resist abrasion and corrosion, it goes on fast and stays on long.

Within waste management corrosion comes from a variety of chemicals (lactic, citric acid, ammonia, etc) each of which have been tested against our Polyurea coating solution.



RoRo lined with Polyurea.

BENEFITS

- Reacts, sets and cures quickly
- Wide temperature & humidity range
- High thermal resistance
- Low temperature flexibility
- Outstanding chemical resistance
- Hydrolysis stable & insensitive to water
- Color stability and UV resistant
- No solvents (100 % solids)
- No catalysts
- Seamless, three-dimensional waterproofing
- Adheres well to all substrates

TECHNICAL DATA

Tensile Strength	MPa 10 – 30
Shore Hardness	A 98 to D 52
Elongation %	up to 1000
Tear Strength, N/mm	20 to 125
100% Modulus, MPa	3.5 to 15
Abrasion, mg	150 - 500
Flex/Crack Bridging (-26°C/-15°F)	>3mm

100% solids, no solvents, and zero V.O.C.s.

Compliant with FDA/USDA for incidental food contact.

Class 1 Fire Rating: ASTM E84-97a complies with NFPA and UBC.

Full technical data sheets available on request.

APPLICATIONS

- Waste water treatment lining
- Biogas / Anaerobic digestors
- Tank coatings and linings
- Pipe / Pipeline coatings and linings
- Manhole and sewer linings
- RoRo or skip linings
- Bridge deck coating
- Fuel storage and containment
- Adhesives and sealants



Call: 07967 698637 or 07590 076265
Email: sales@reku-coatings.com
Website: www.reku-coatings.com

REKU

COATINGS



REKU Coatings Limited
Unit 36 B
Bailie Gate Industrial Estate
Wimborne
BH21 4DB

Tel: 07967 698 637 or 07590 076 265
Email: sales@reku-coatings.com
Website: www.reku-coatings.com

Please note:

In order to provide an accurate estimate we require the approx. surface area and condition of the existing or new substrate.

In some cases a full site survey will be required (*free of charge*).